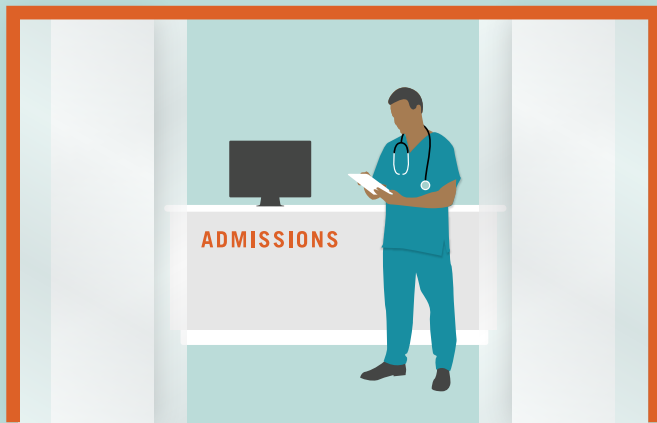


# 340B SAVINGS SUPPORT PATIENT CARE

## Hospitals unanimously report using 340B savings to care for low-income and rural patients

### RURAL HOSPITALS



74%

of rural hospitals say 340B savings are the difference between staying open and closing their doors

### DSH HOSPITALS



95%

of DSH hospitals use 340B savings to provide uncompensated care

80%

of DSH hospitals use 340B savings to offset low Medicaid reimbursements

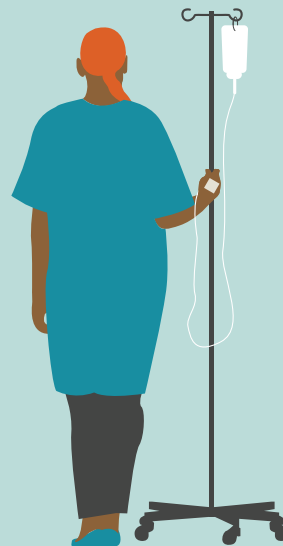
### IF 340B SAVINGS ARE REDUCED ...

75%

of DSH hospitals say they would have to cut back on uncompensated care

71%

of hospitals said they would have to cut back on oncology services



Results based on survey of 340B Health members conducted in November-December 2017.