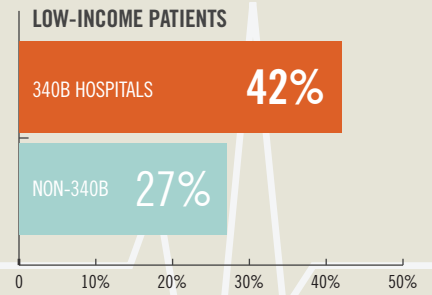


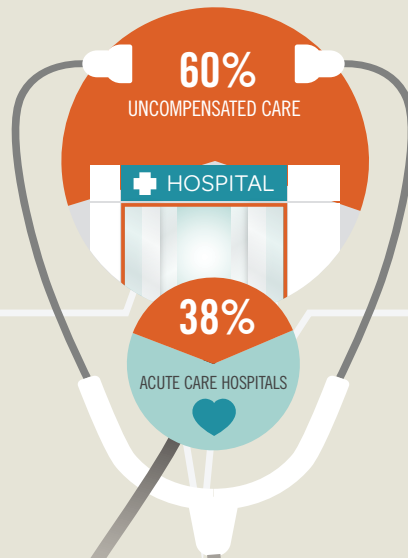
# 340B HOSPITALS ARE VITAL SAFETY-NET HEALTHCARE PROVIDERS

**340B hospitals treat significantly more low-income patients**



Low-income patients make up 42% of 340B DSH hospitals' patient load versus 27% for non-340B hospitals.

**340B hospitals provide more uncompensated and unreimbursed care**



340B DSH Hospitals represent only 38% of acute care hospitals, yet are responsible for 60% of the nation's uncompensated and unreimbursed care—more than \$26 billion.

**340B hospitals provide more services critical to low-income patients**

340B DSH hospitals are more likely to offer services that are critical to low-income patients but often underpaid.

